

# MIDJ

## Armando Table

design Balutto Associati, 2011

Armando fixed table with metal frame and top. Available in different dimension, height 76 cm (29.9 inches).

Height 110 cm (43.3 inches) also available for every variant.

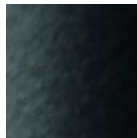


### Colors and Materials

#### Structure



White steel

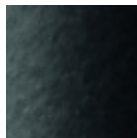


Black steel

#### Coating



White steel



Black steel

### Dimensions



	A (cm)	B (cm)	C (cm)
	(inch)	(inch)	(inch)
<b>80x80 (cm)</b>	76	80	80
(inch)	29.9	31.5	31.5
<b>90x90 (cm)</b>	76	90	90
(inch)	29.9	35.4	35.4
<b>160x90 (cm)</b>	76	160	90
(inch)	29.9	63	35.4

	<b>A (cm)</b>	<b>B (cm)</b>	<b>C (cm)</b>
	(inch)	(inch)	(inch)
<b>200x100</b>			
<b>(cm)</b>	76	200	100
(inch)	29.9	78.7	39.4
<b>280x100</b>			
<b>(cm)</b>	76	280	100
(inch)	29.9	110.2	39.4

---

## Volumetric Details

**Weight** 30 Kg

**Volume** 0.15 mc

**Package** 2